

## Jacketed Valve



### Jacketed Globe Valve BJ45

Application norm:

- 1, Design Manufacture According to GB12235-59
- 2, Face to Face According to GB12221-89
- 3, Flange Dimension According to JB/T79-94
- 4, Valve Check and Test According to GB13927

Structure:

B.B; OS&Y

Application norm:

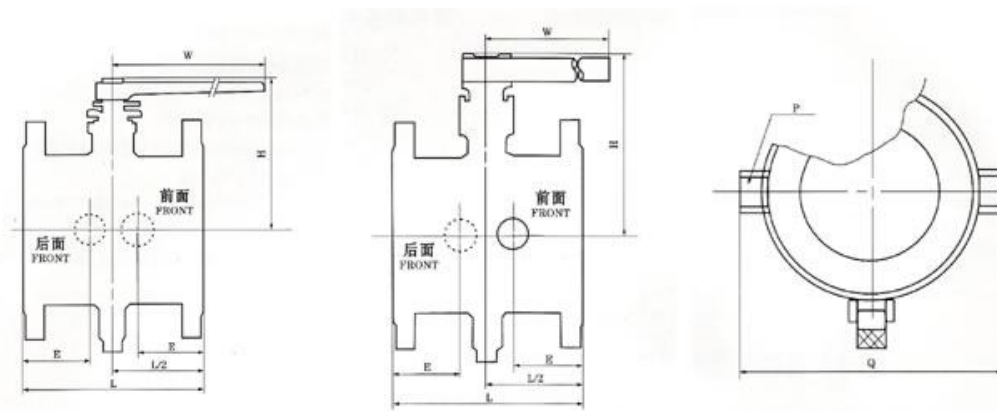
- 1, Design Manufacture According to GB12235-59
- 2, Face to Face According to GB12221-89
- 3, Flange Dimension According to JB/T79-94
- 4, Valve Check and Test According to GB13927

Structure:

B.B; OS&Y



### Jacketed Globe Valve BQ41



**150LB**

Dimensions	in	3/4"	1"	1-1/2"	2"	3"	4"	6"	8"
	DN	20	25	40	50	80	100	150	200
L	mm	117	165	178	229	254	165	292	330
H	mm	101	106	125	135	193	265	335	410
W	mm	160	160	230	230	400	650	1050	1050
E	mm	58.5	63.5	62.5	68	82	83	95	100
P	DN	NPT3/4	NPT3/4	NPT3/4	NPT3/4	NPT3/4	NPT3/4	NPT3/4	NPT1
Flange specifications	DN	1-1/2"	2"	2-1/2"	3"	6"	8"	10"	14"

**300LB**

Dimensions	in	3/4"	1"	1-1/2"	2"	3"	4"	6"	8"
	DN	20	25	40	50	80	100	150	200
L	mm	117	165	178	229	254	165	292	330
H	mm	101	106	125	135	193	265	335	410
W	mm	160	160	230	230	400	650	1050	1050
E	mm	58.5	63.5	62.5	68	82	83	95	100
P	DN	NPT3/4	NPT3/4	NPT3/4	NPT3/4	NPT3/4	NPT3/4	NPT3/4	NPT1
Flange specifications	DN	1-1/2"	2"	2-1/2"	3"	6"	8"	10"	14"



**Jacketed Globe Valve BQ45**

